

1-2

Containers of up to
3500 l.

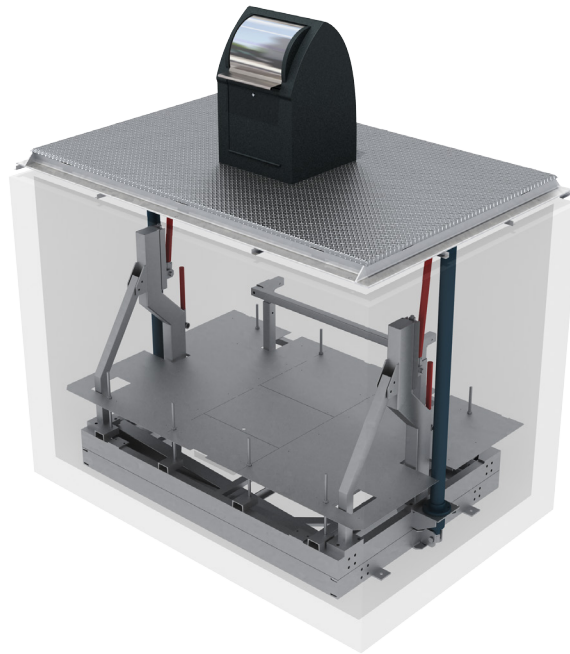
6.500kg
MAXimum nominal
weight

PnP

Plug & Play, no
installation required

8%

Maximun gradient



FEATURES

Balanced operation using single-acting cylinders and scissor lifts.

Single and double equipment available to accommodate side-loading containers of up to 3,500 litres.

Lifting structures and platform manufactured from hot-dip galvanised steel in accordance with the ISO 1461 standard.

Walk-on platform with hot-dip galvanised steel anti-slip checker plate or tray for paving.

Designed to work with a low pressure hydraulic circuit resulting in greater durability.

COLUMNS



Milenium



Europa



EVO

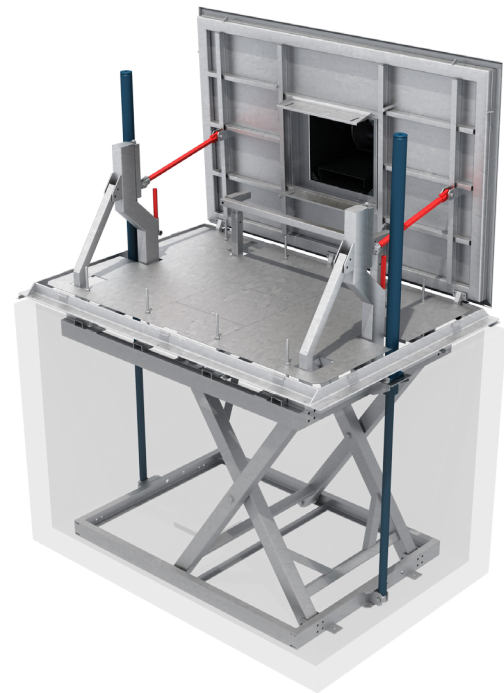
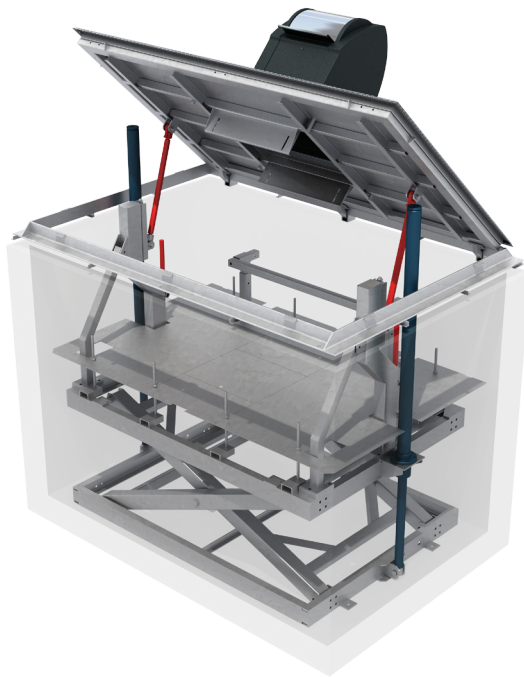


Austral



Cité

FEATURES



Column

Millenium, Europa and Cité models manufactured from high-density polyethylene

EVO and Austral models manufactured from galvanised or stainless steel

Available with apertures for glass, paper and plastics, or pedal-operated single/double drum with capacities ranging from 30 to 120 litres

Meets the most stringent accessibility standards.

Platform

Manufactured from an S275-JR tubular steel structure and 3 - 8 mm sheet steel

Fully hot-dip galvanised to meet the ISO 1461 standard

Platform finished with a 3/5 mm hot-dip galvanised anti-slip checker plate or tray for paving (45 mm)

Adjustable for gradients of up to 8%

Lifting structure

Manufactured from an S275-JR tubular steel structure and UPN profiles.

Lifting mechanism based on two single-acting hydraulic cylinders, manufactured with an ST-52 sleeve and F-114 Ø 80 mm chrome valve rod, with a total lifting capacity of 6,500 kg.

Fitted with parachute safety valves and lock bolts for maintenance work.

Prefabricated concrete

Monoblock enclosure manufactured using a self-compacting mould and HA-35 (C40/50) concrete

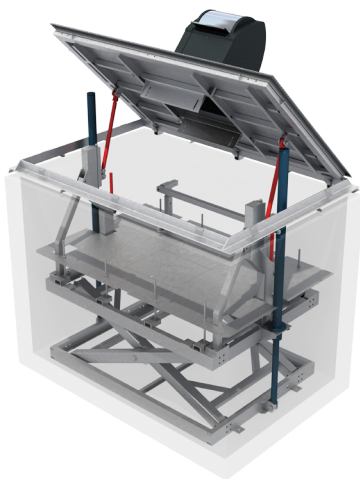
Classified as XS3 under the EN 206 standard.

OPERATING THE EQUIPMENT



Hydraulic lifting system

The equipment can be operated using an autonomous 5kW hydraulic lifting system located in a separate chamber with a programmable remote control mechanism. This system can operate up to 5 units (not simultaneously)



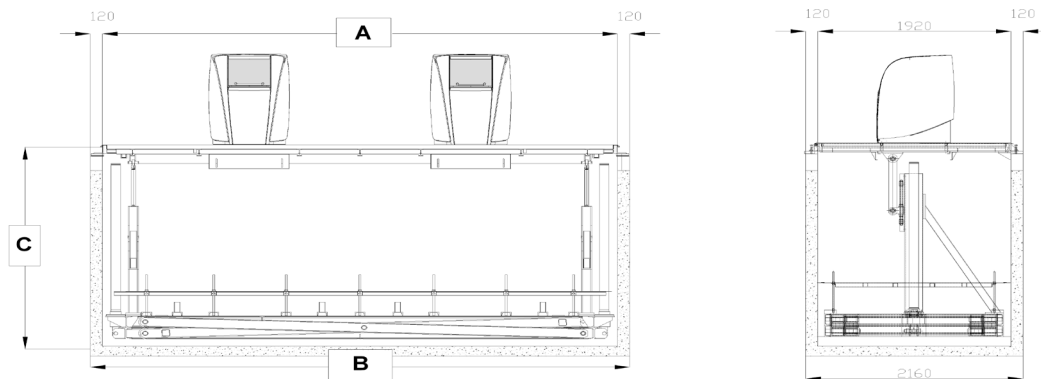
Times

Programmable to meet customer requirements

13 seconds up (standard)
13 seconds down (standard)



DIMENSIONS



GENERAL DIMENSIONS

	SCL - 1	SCL - 2
Number of containers	1	2
Length (A) / Width / Height (mm) (Inner)	3170 x 2160 x 2345	4010 x 1600 x 1800
Length (B) / Width / Height (C) (mm) (Outer)	3170 x 2160 x 2345	5355 x 2160 x 2345
Surface height	951 mm	951 mm

CUSTOMISATION AND ACCESSORIES



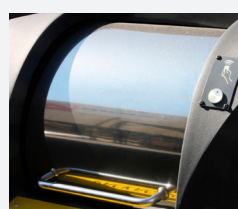
RANGE OF COLOURS

Columns can be painted in any colour from the RAL standard



CRESTS AND LOGOS

Customisation with the client's crest/logo and recycling symbols



ACCESS CONTROL

Adapted to ensure compatibility with the most common systems.



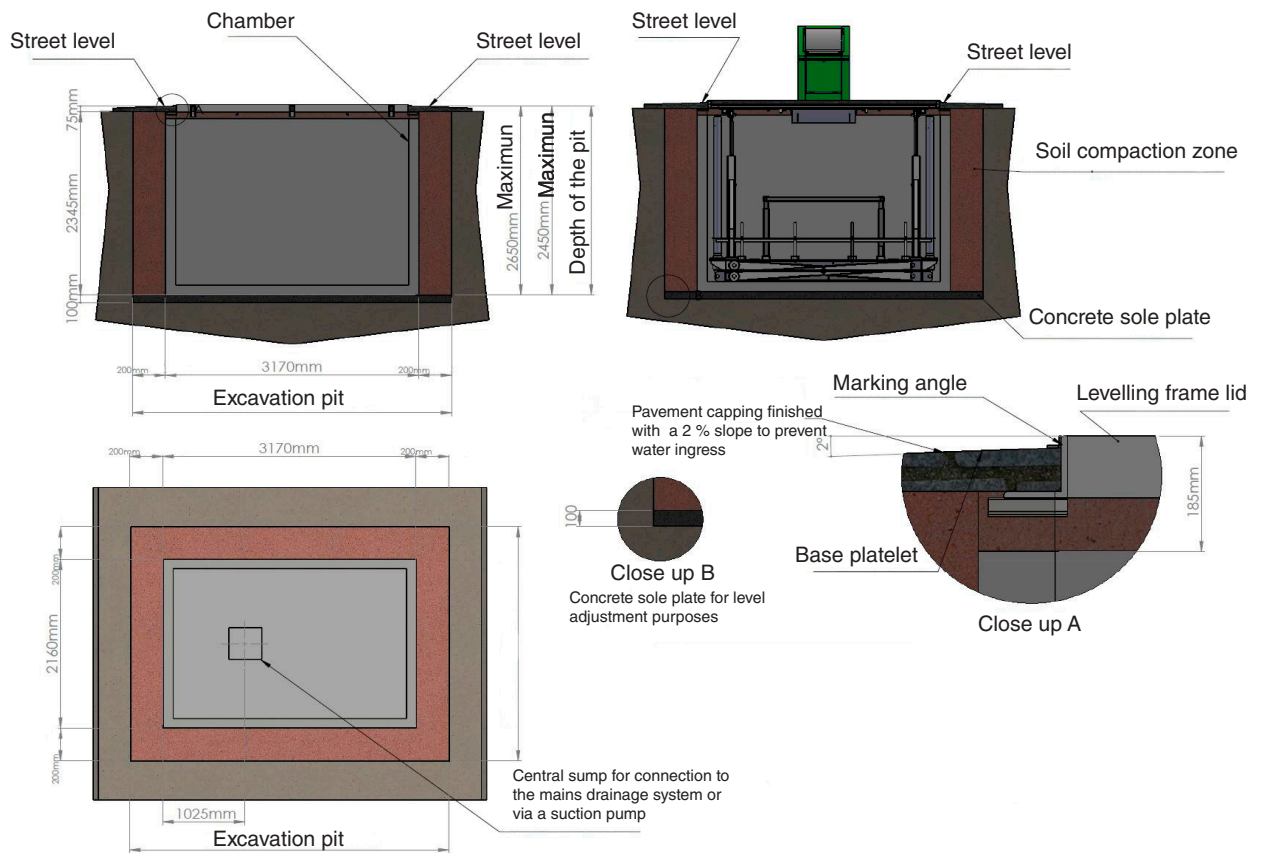
FILL CONTROL SYSTEM

Adapted to ensure compatibility with the most common systems.

CIVIL WORKS

Contenur SCL underground containers have been produced to minimise the costs and time required for civil works. All equipment is supplied ready for use. All that is needed is to fit the waste deposit column (for installations in streets without a gradient). The dimensions of the system are designed to optimise excavation and the fill ratios of the container.

During the installation process, the Contenur Technical Department will provide customer support to ensure the correct execution of civil works. It is vital that all parties involved work together closely. We provide solutions, not just high-quality, durable equipment.



MAINTENANCE

Contenur SCL systems are characterised by their durability and low maintenance costs, and have been designed for use in harsh environments. They have an average lifespan of over 15 years. As with any piece of machinery, we recommend periodic maintenance and cleaning to ensure the durability, hygiene and safety of the equipment. The equipment comes with a detailed manual with information on recommended maintenance tasks and frequencies.