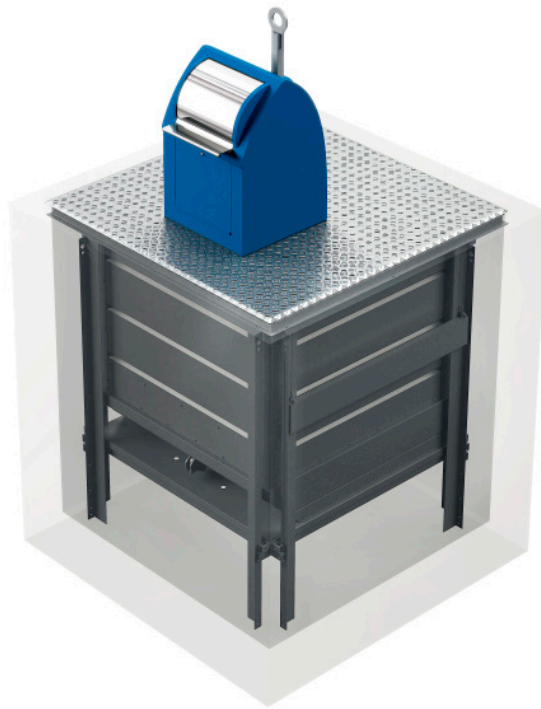


**5.000<sub>Kg</sub>**  
Maximum Capacity

**460<sub>L</sub>**  
Unladen weight

**2.735<sub>Kg</sub>**  
Nominal weight

**82,4<sub>lwa (dB)</sub>**  
Directive 2000/14/CE



## FEATURES

Equipment conforms to EN 13071-1:2008 and EN 13071-2:2008.

Concrete prefabrications classified as XS3 under the EN-206 standard.

Available volumes: 3 m<sup>3</sup>, 4 m<sup>3</sup> and 5 m<sup>3</sup>.

Containers manufactured from galvanised steel and linear high-density polyethylene (LHDPE) with up to 300 L leachate capacity.

Walk-on platform with galvanised steel anti-slip checker plate or tray for paving.

62.4 LpA (dB) and 82.4 LWA (dB) in line with directive 2000/14/EC.

## COLUMNS



Milenium



Europa



EVO

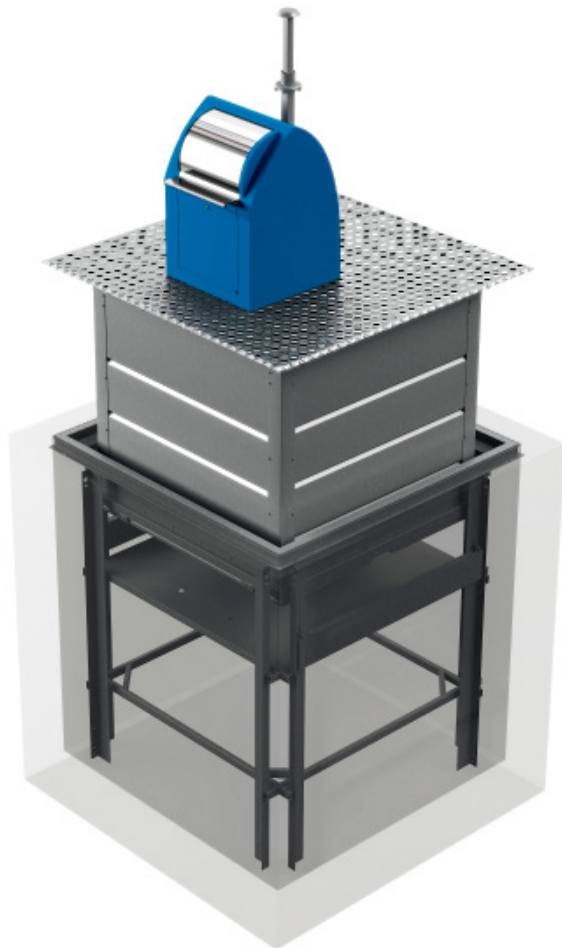


Austral



Cité

## COMPONENTS



### Column

Millenium, Europa and Cité models manufactured from high-density polyethylene.  
EVO and Austral models manufactured from galvanised or stainless steel.  
Available with apertures for glass, paper and plastics, or pedal-operated single/dual drum with capacities ranging from 30 to 120 litres.  
Meets the most stringent accessibility standards.  
Independent of lifting system.

### Container

Manufactured from galvanised 2 or 3 mm sheet steel or 7 mm LHDPE.  
Available capacities: 3, 4 and 5 m3.  
Emptying doors with up to 300 L leachate retention capacity.  
Walk-on platform finished with a single piece of 3/5 mm hot-dip galvanised anti-slip checker plate or tray for paving (45 mm).

### Safety platform

Adjustable for different containers in the same prefabricated concrete unit.  
Automatic operation with guided counterweights, pulleys and stainless steel cables.  
Fitted with an advanced system for the removal of rainwater or surrounding water.  
Withstands up to 240 kg.

### Prefabricated concrete

Monoblock enclosure manufactured using a self-compacting mould and HA-35 (C40/50) concrete.  
Classified as XS3 under the EN 206 standard.

## CUSTOMISATION AND ACCESORIES



### COLOURS

Columns can be painted in any colour from the RAL standard.



### CRESTS AND LOGOS

Customisation with the client's crest/logo and recycling symbols



### ACCESS CONTROL

Adapted to ensure compatibility with the most common systems.



### FILL CONTROL SYSTEM

Adapted to ensure compatibility with the most common systems

## LIFTING / COLLECTION SYSTEM



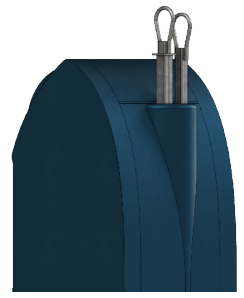
**Kinshofer**



**Kinshofer FLEX**

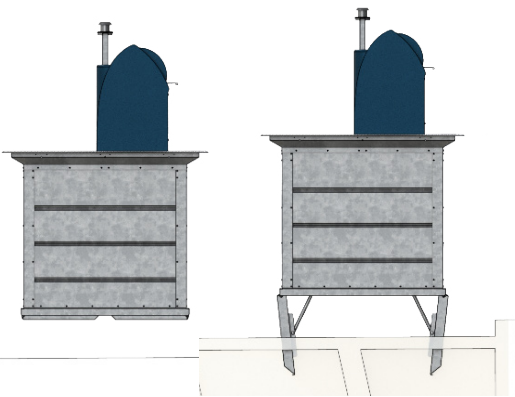


**Single hook**

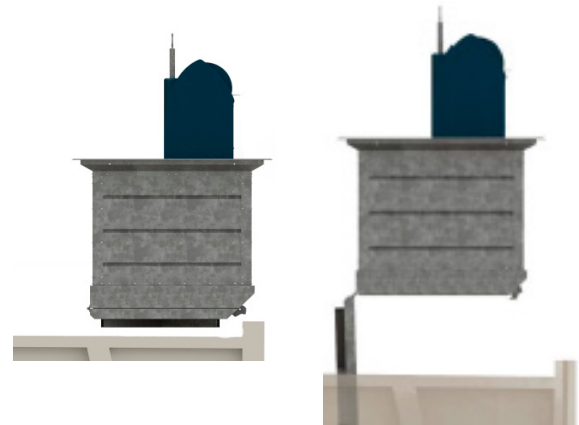


**Double hook**

## DOUBLE DOOR SYSTEM



## SINGLE DOOR SYSTEM



Can be lifted via Kinshofer, double and triple hook systems.

Container manufactured from 2 and 3 mm galvanised sheet steel.

Two emptying doors with leachate retention capacity of 300 L.

Door linkage with central yoke and galvanised steel bars.

Standard insulation for containers used for glass collection.

Can be lifted via a single hook system.

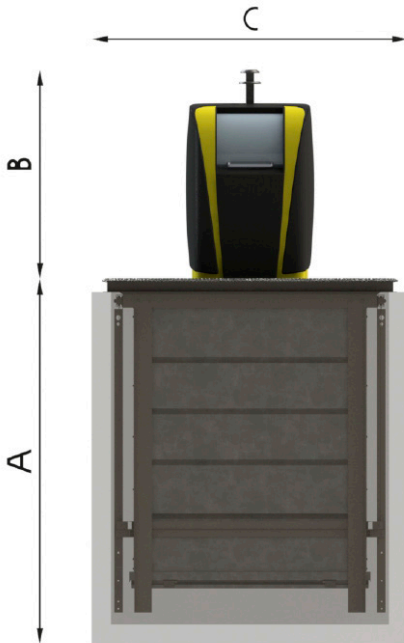
Container manufactured from 2 and 3 mm galvanised sheet steel.

Emptying doors with retention capacity of 160 L for leachates.

Door linkage via central latch mechanically activated from the load area of the collection truck.

Standard insulation for containers used for glass collection.

## DIMENSIONS



GENERAL DIMENSIONS			
	SCV3	SCV4	SCV5
Length / Width (mm)	1980 x 1980	1980 x 1980	1980 x 1980
Buried depth (with 4 m3 prefabrication)	2260 mm.	2260 mm.	.....
Buried depth (with 5 m3 prefabrication)	2670 mm.	2670 mm.	2670 mm.
Surface height	951 mm.	951 mm.	951 mm.
Container working volume	2910 dm3	3800 dm3	4730 dm3.

## WEIGHTS AND LOADS

### SCV WEIGHTS AND LOADS -METAL CONTAINERS

	Material	Unladen weight	Laden weight (1)	Safety Platform load
SCV 3	Galvanised steel	600 kg.	Plastics 1460 kg. / Glass 2420 kg.	Up to 240 kg.
SCV 4	Galvanised steel	625 kg.	Plastics 1710 kg. / Glass 2735 kg.	Up to 240 kg.
SCV 5	Galvanised steel	655 kg.	Plastics 1975 kg. / Glass 3565 kg. (2)	Up to 240 kg.

(1) Depending on type of waste, according to density: 0.6 kg/L for glass; 0.25 kg/L for plastics.

(2) Not recommended for glass due to its heavy weight.

### SCV WEIGHTS AND LOADS-LHPD CONTAINERS

	Material	Unladen weight	Laden weight (1)	Safety Platform load
SCV 3	LHPD	460 kg.	Plastics 1280 kg. / Glass 2260 kg.	Up to 240 kg.
SCV 4	LHPD	480 kg.	Plastics 1475 kg. / Glass 2700 kg.	Up to 240 kg.
SCV 5	LHPD	510 kg.	Plastics 1800 kg. / Glass 3440 kg. (2)	Up to 240 kg.

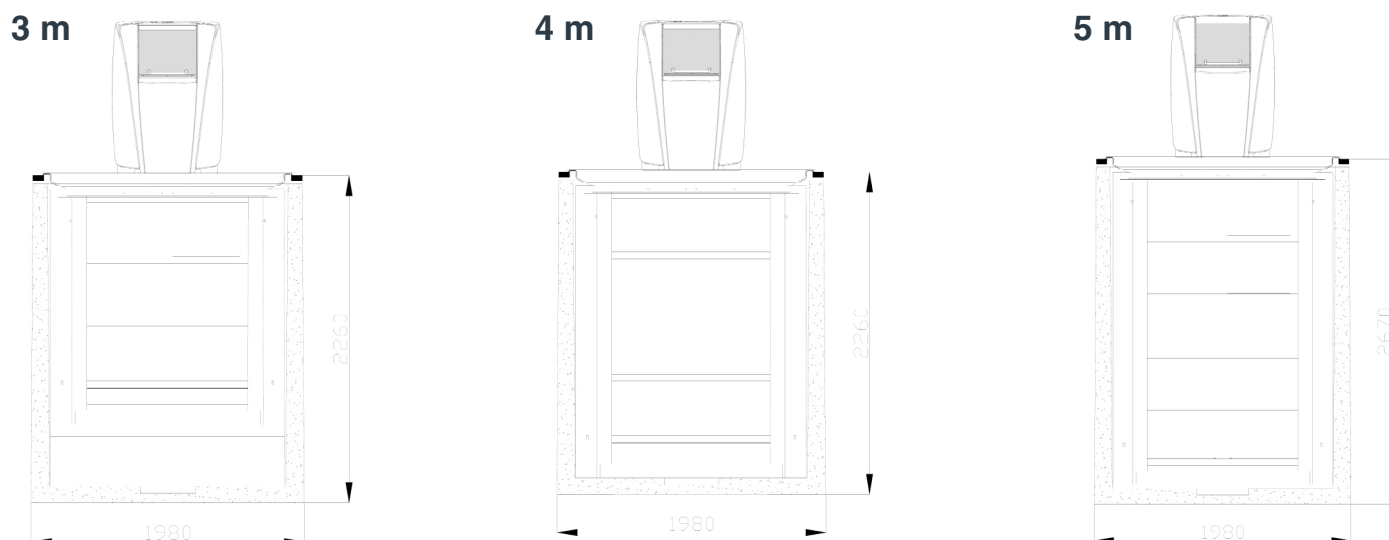
(1) Depending on type of waste, according to density: 0.6 kg/L for glass; 0.25 kg/L for plastics.

(2) Not recommended for glass due to its heavy weight.

## CIVIL WORKS

Contenur SCV underground containers have been produced to minimise the costs and time required for civil works. All equipment is supplied ready for use. All that is needed is to fit the waste deposit column. The dimensions of the system are designed to optimise excavation and the fill ratios of the container.

During the installation process, the Contenur Technical Department will provide customer support to ensure the correct execution of civil works. It is vital that all parties involved work together closely. We provide solutions, not just high-quality, durable equipment.



## MAINTENANCE

Contenur SCV systems are characterised by their durability and low maintenance costs, and have been designed for use in harsh environments with an average lifespan of over 15 years.

As with any piece of machinery, we recommend periodic maintenance and cleaning to ensure the durability, hygiene and safety of the equipment. The equipment comes with a detailed manual with information on recommended maintenance tasks and frequencies.